



VF300

Smart Face Identification Terminal

Introduction

VF300 is a new generation face identification terminal, with Face, RFID and PIN identification mode. With latest face algorithm ZK Face 7.0 and large capacity ZEM810 platform, it holds 200 face templates without dividing groups, and its verification time is less than 1 Second. All setting operations are easily done on 3.0 inches TFT touch screen. The elegant and small size design can fit with your slap-up office. Have ZK face identification system, your life will become more secure and convenient.



Copyright © 2011, ZKSoftware, Inc. All rights reserved.

ZKSoftware may, at any time and without notice, make changes or improvements to the products and services offered and/or cease producing or commercializing them. The ZKSoftware logo and trademark are the property of ZKSoftware Inc.



Features:

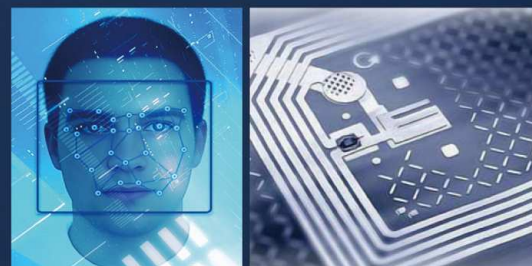
- * Elegant ergonomic design.
- * Face, RFID, PIN identification mode.
- * TCP/IP communication and USB Host.
- * 3.0 inch TFT touch screen, T9 Input, 9 Digit User ID.
- * Infra-red optical system enables user-identification in poor lit environments.
- * Optional Mifare card module.

Configuration:



Specifications:

Core Board	Platform: ZEM810
Image Sensor	Special Stereo Dual Sensor
Display	3 Inch Touch Screen
Face Capacity	200(1:N)
ID Card Capacity	10,000
Logs Capacity	100,000
Algorithm Version	ZKFace7.0
Communication	TCP/IP, USB-Host.
Standard Functions	ID Card, Automatic Status Switch, Self-Service Query, Work Code, T9 input, 9 Digit User ID, DLST, Scheduled-bell.
Optional Functions	Mifare Card.
Power Supply	12V/1.5A.
Verification Speed	≤1S.
Operating Temperature	0℃-45℃
Operating Humidity	20%-80%
Dimensions	104.70(L)*160.00(H)*36.00(D) mm



ZKSoftware Inc.

ZK Mansion, Wuhe Rd, Gangtou, Bantian, Buji Town, Longgang District, Shenzhen China 518129
 Tel: 86-755-8960 2345/46/47/48
 Fax: 86-755-8960 2675
www.zksoftware.com

