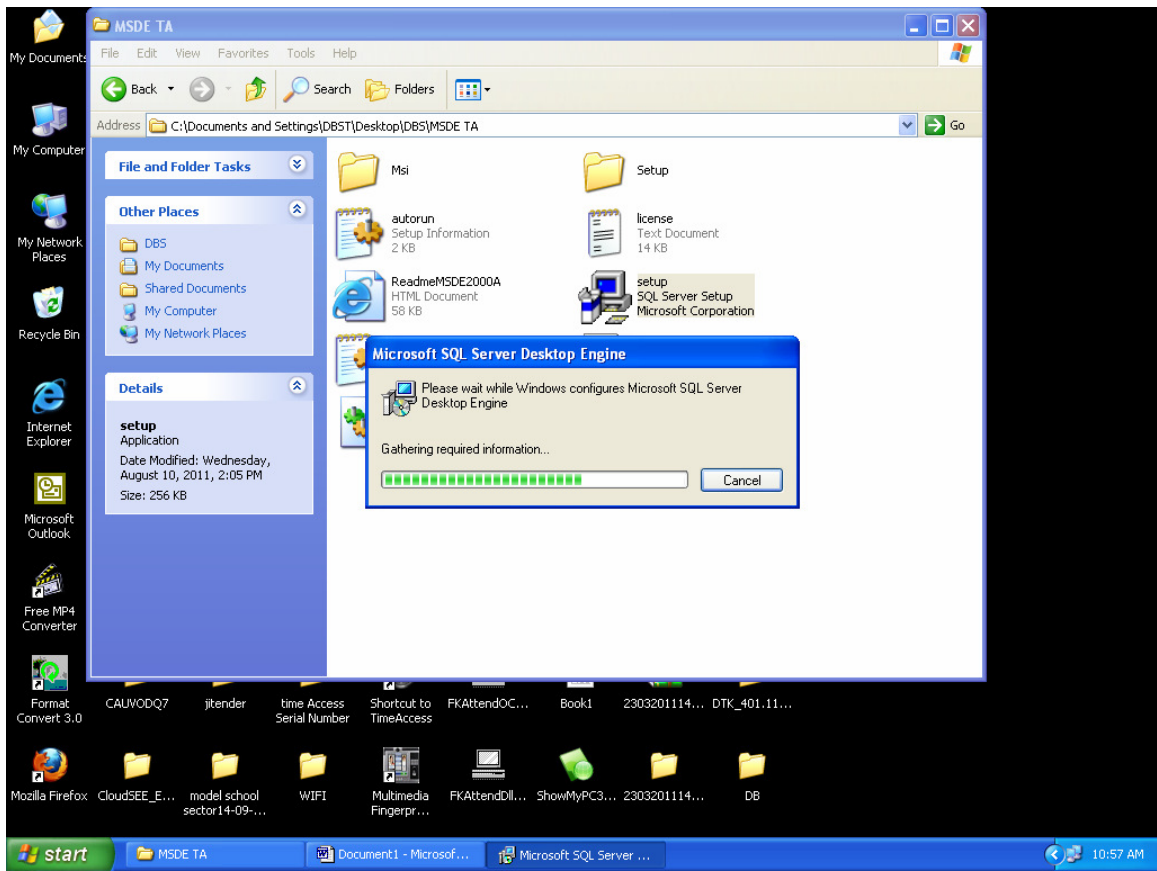
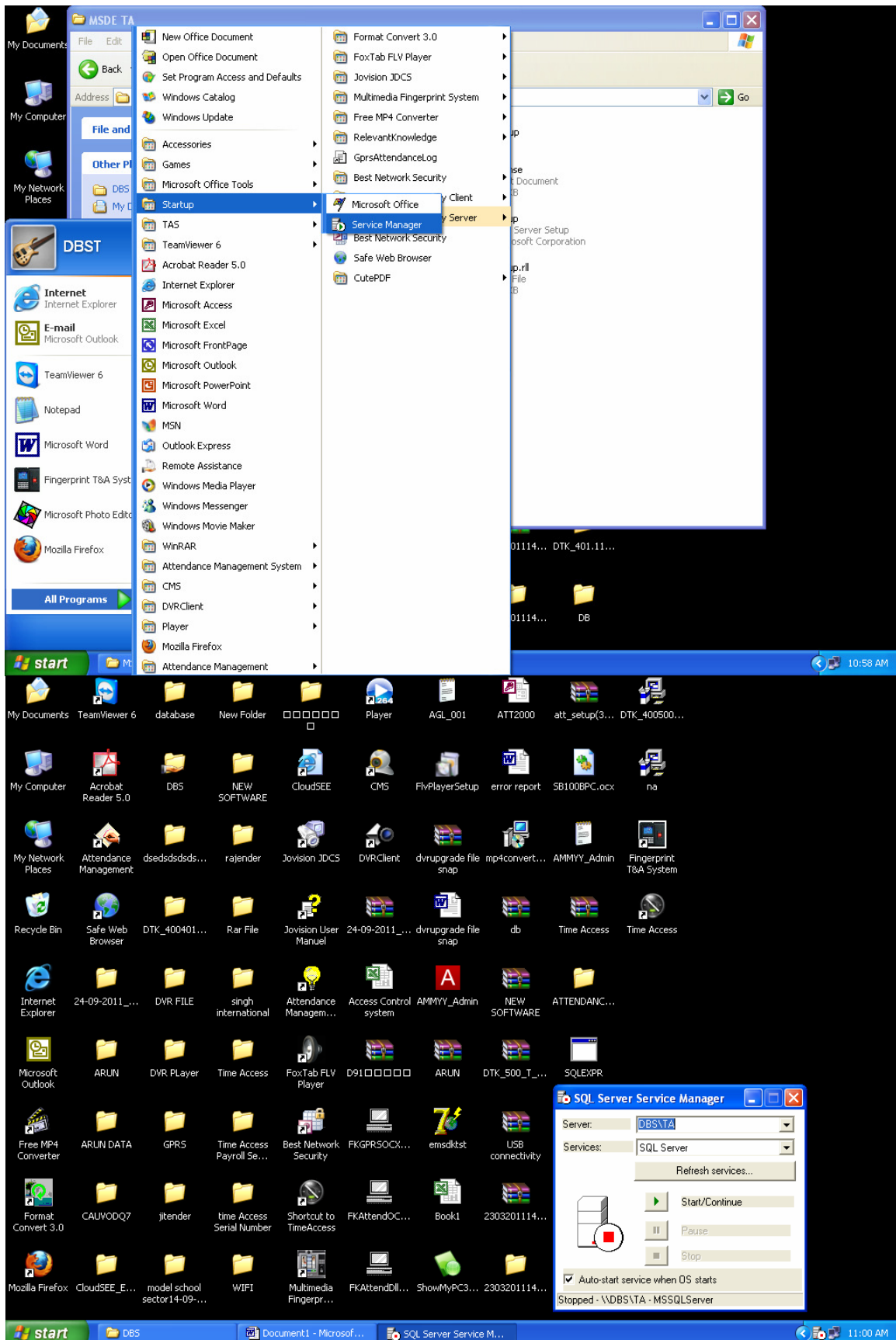


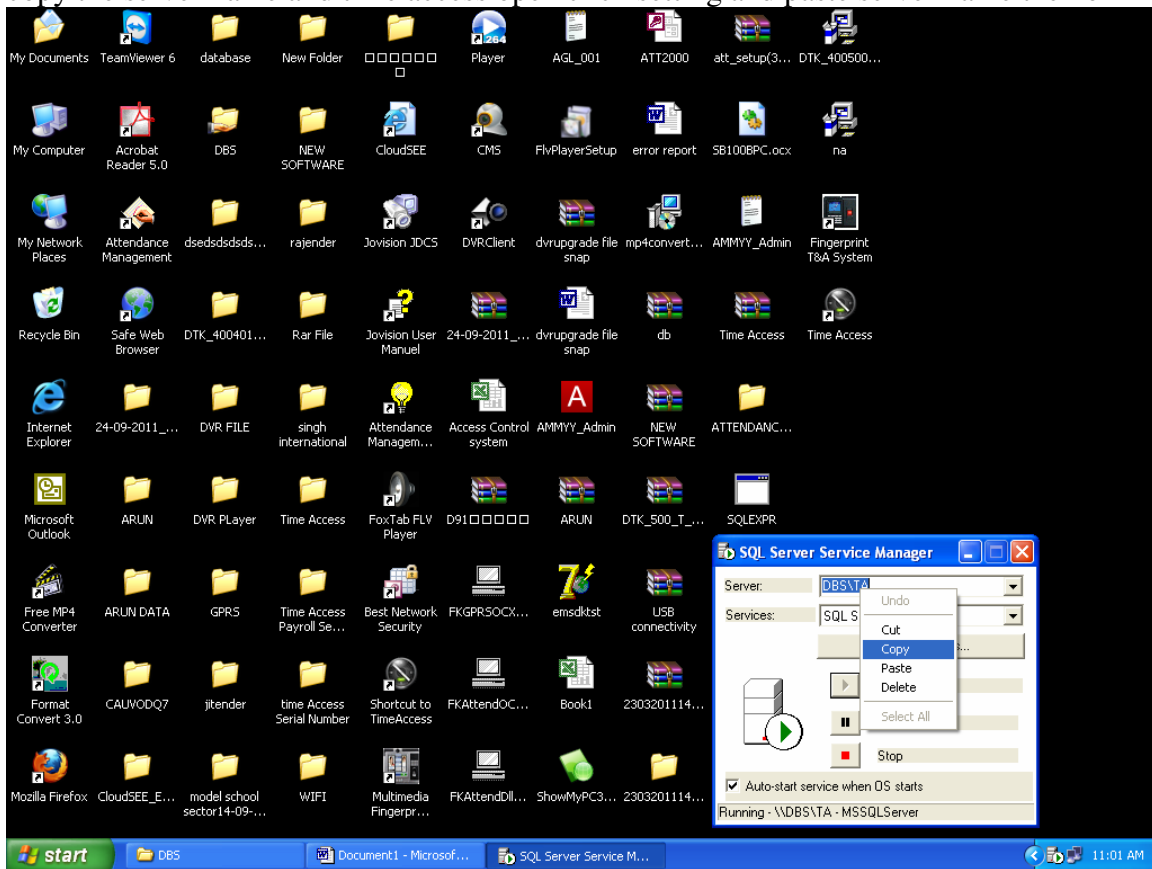
RUN SETUP MSDE TA CLICK EXE SETUP

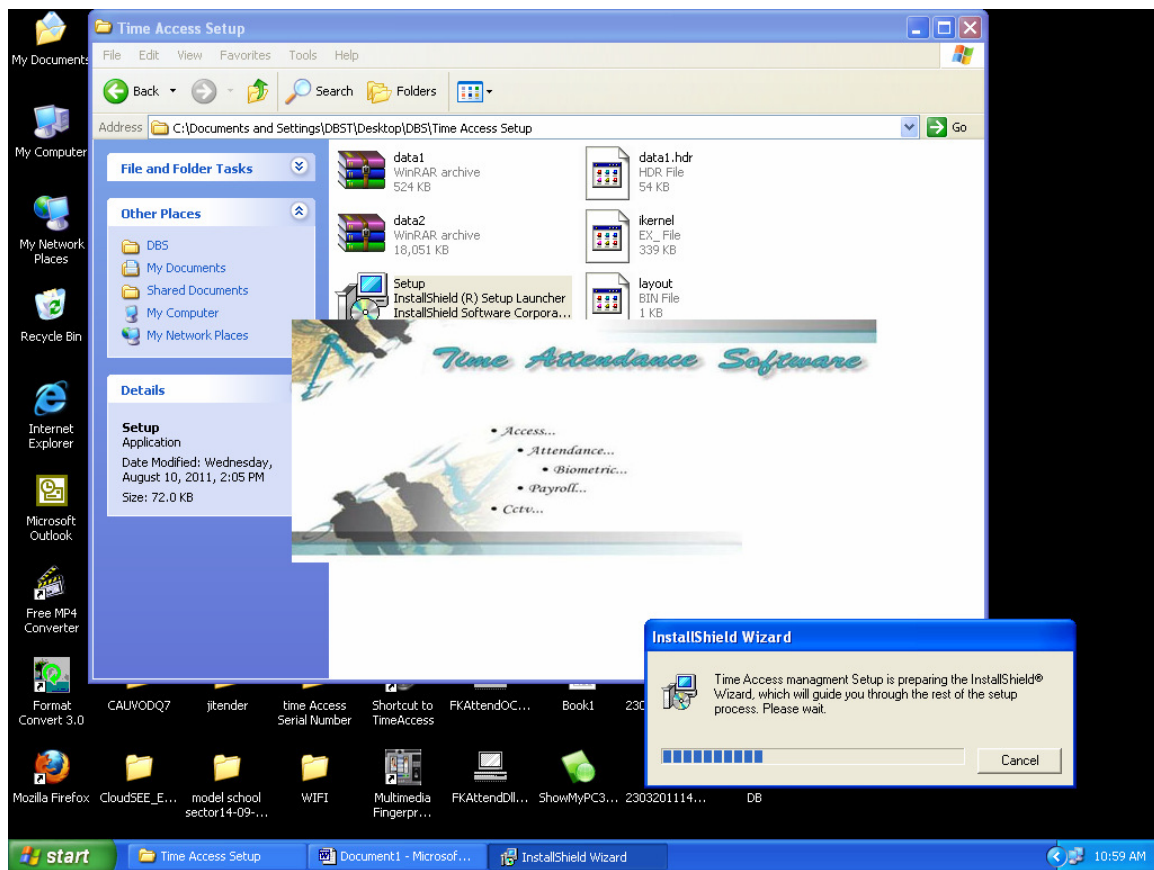


After installation click start –all programs –statup-srvce manager and start the sql server

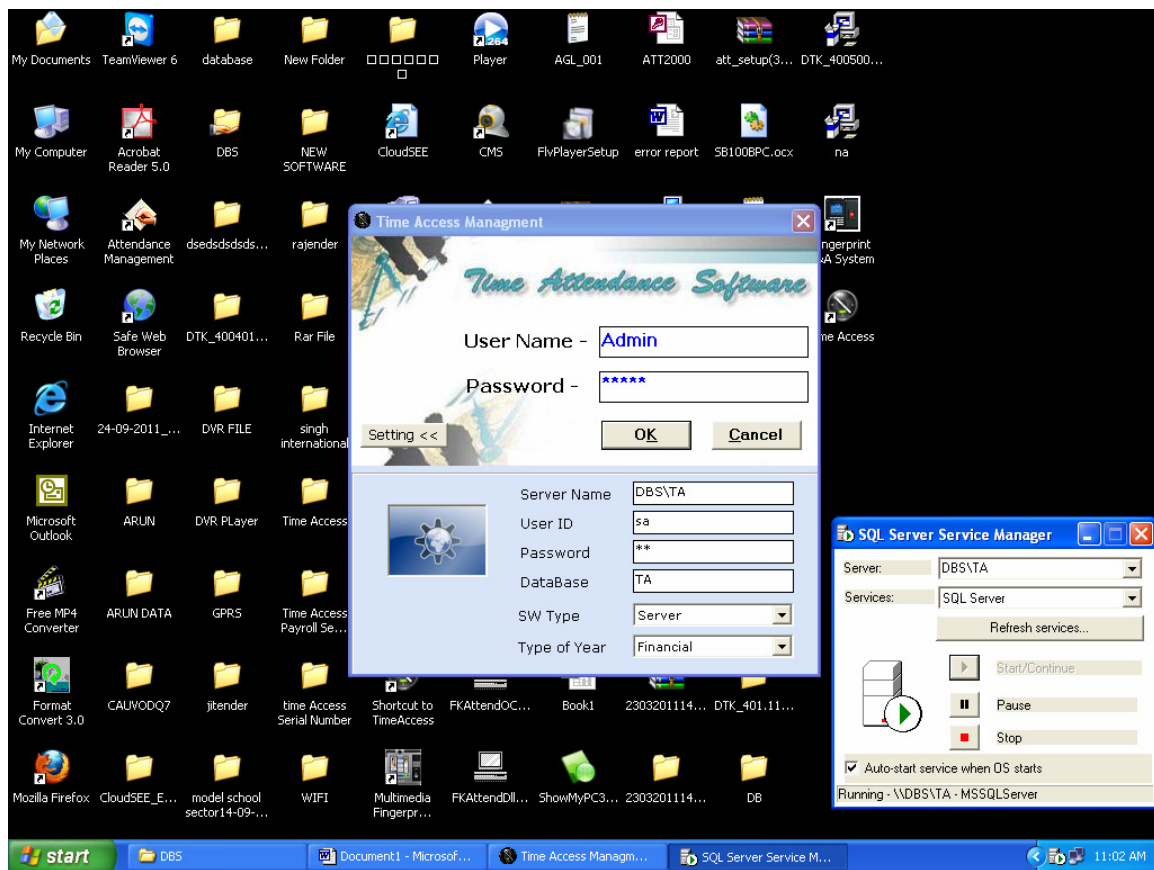


copy the server name and time access open click setting and paste server name then ok

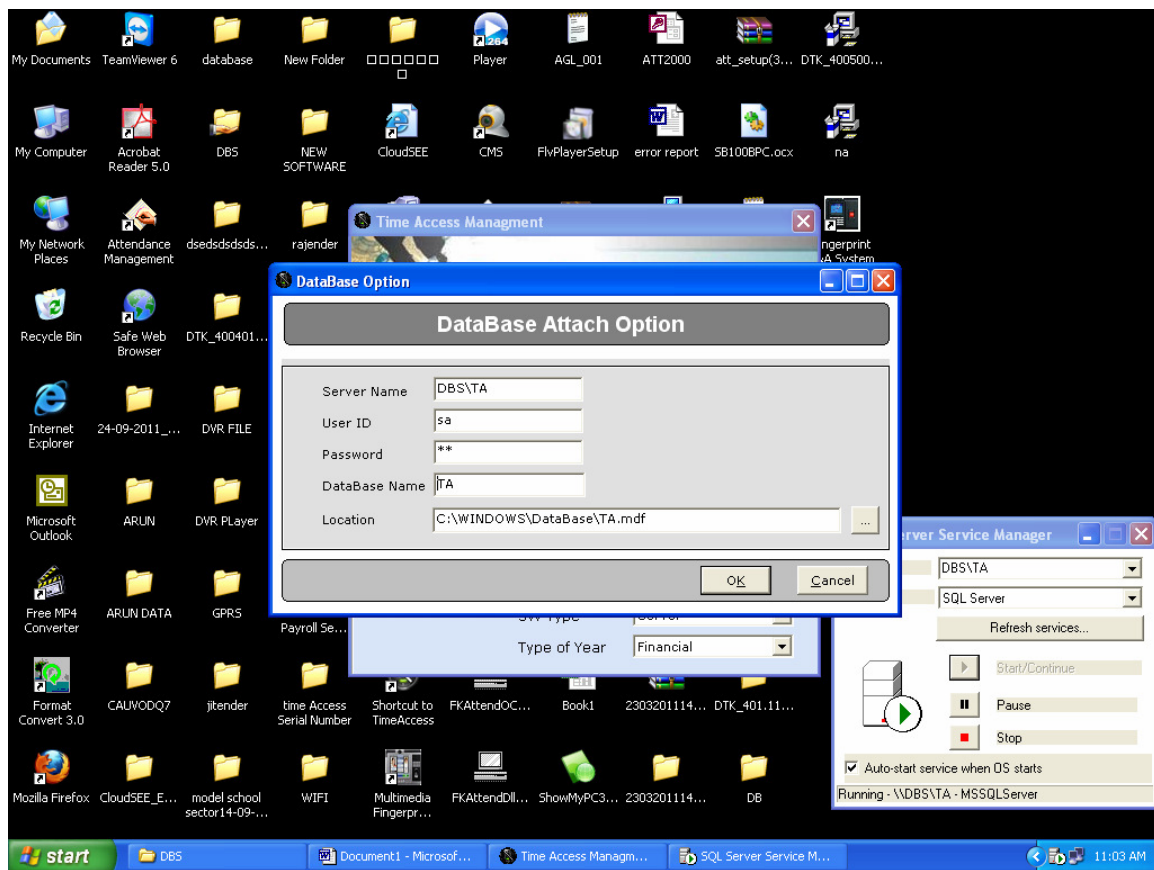




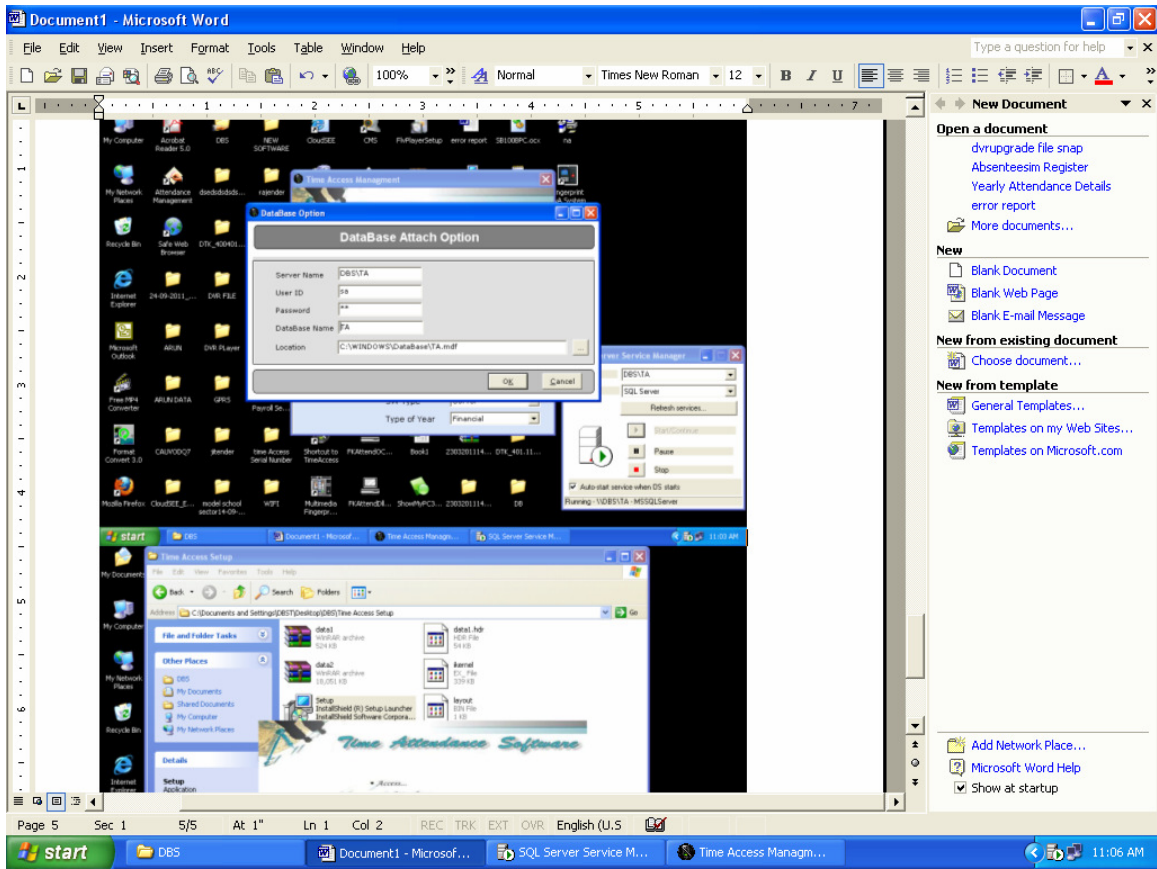
copy sql the server name and time access open click setting and paste server name then ok



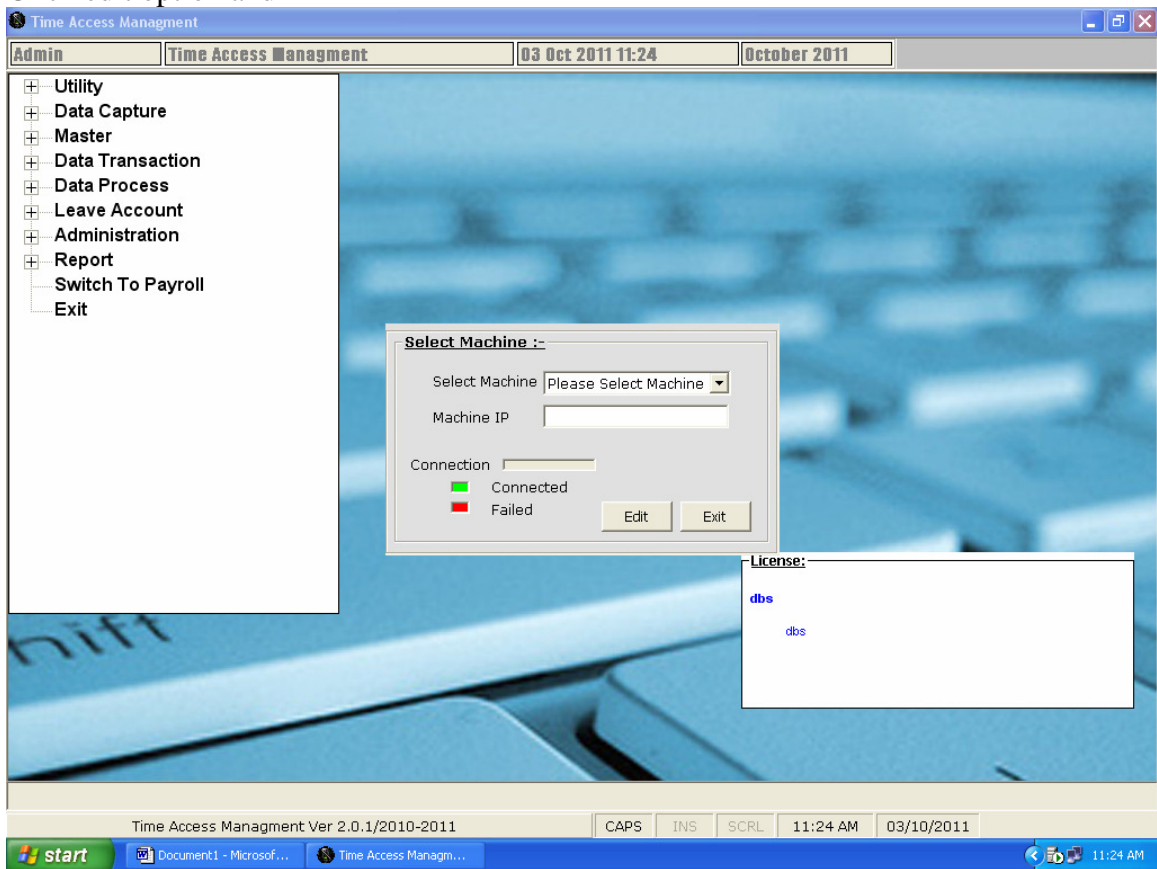
click ok



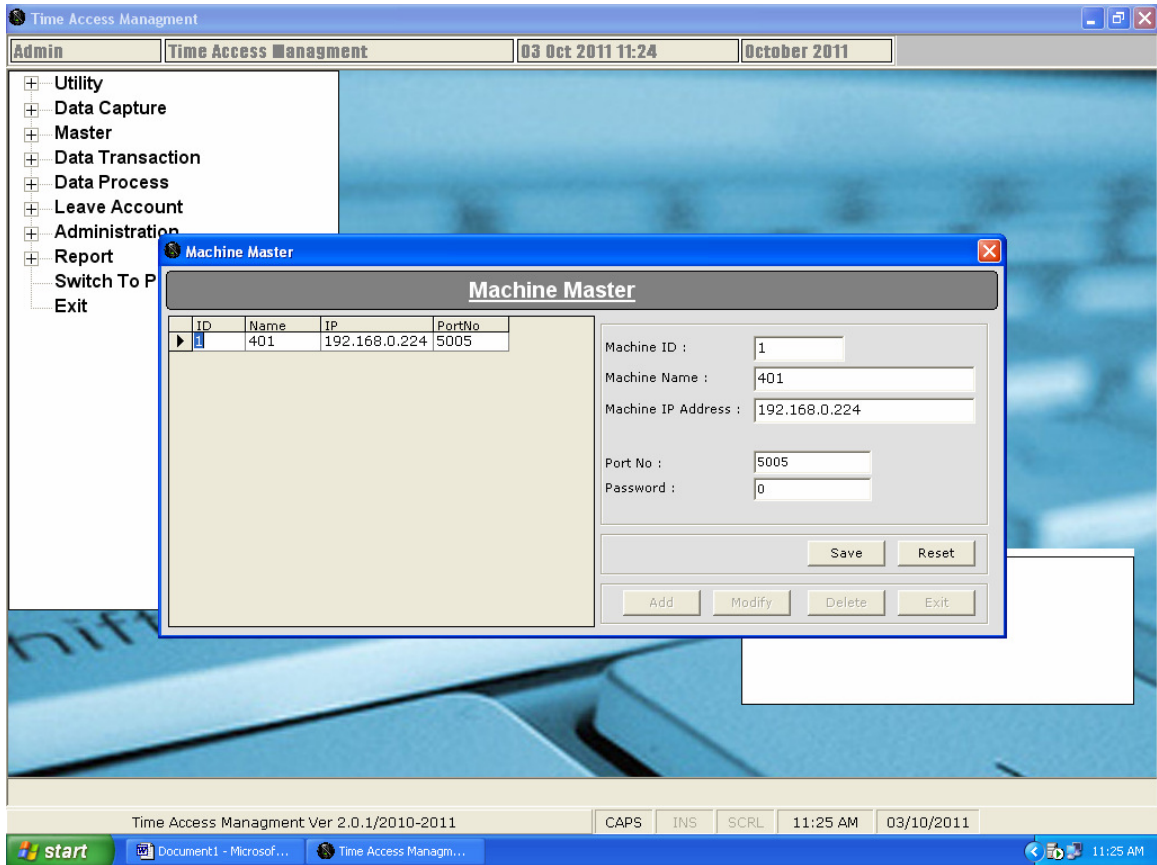
click ok attach the database write the company name and address click ok

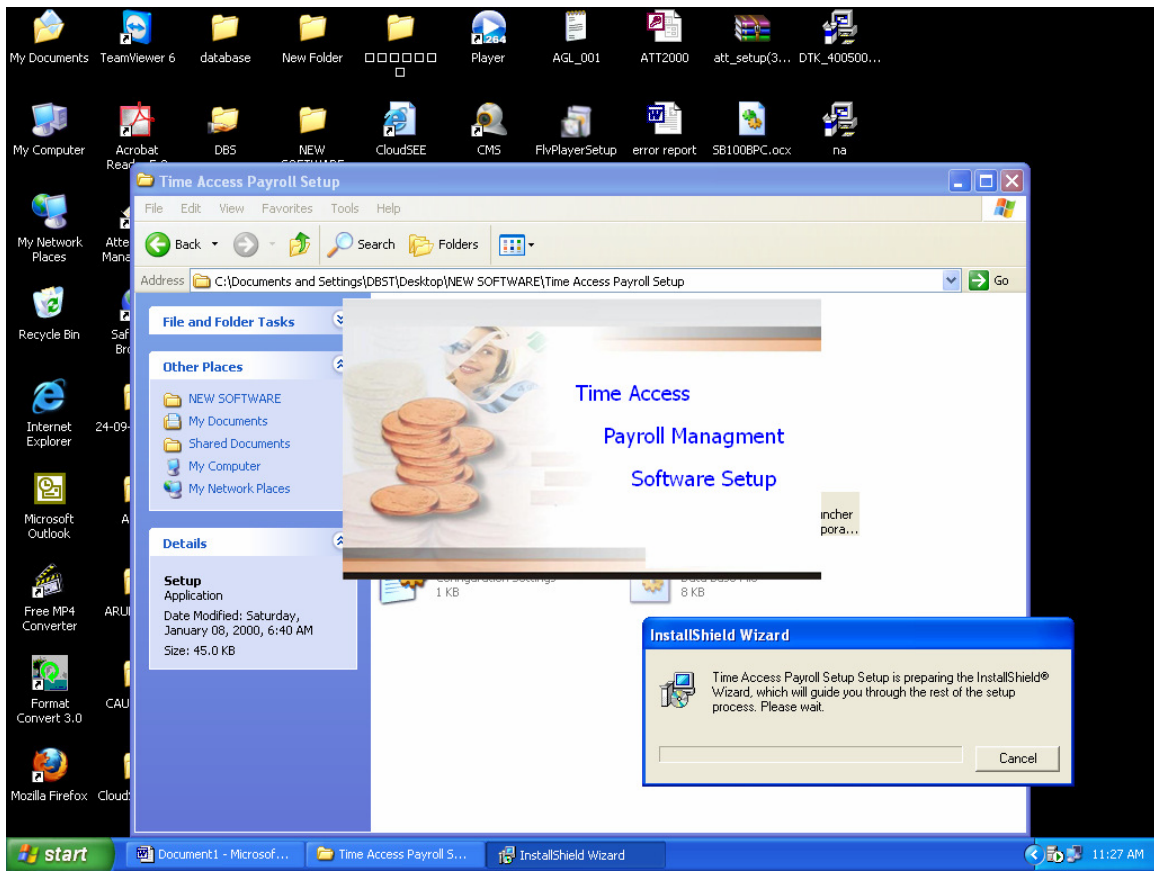


Click edit option and

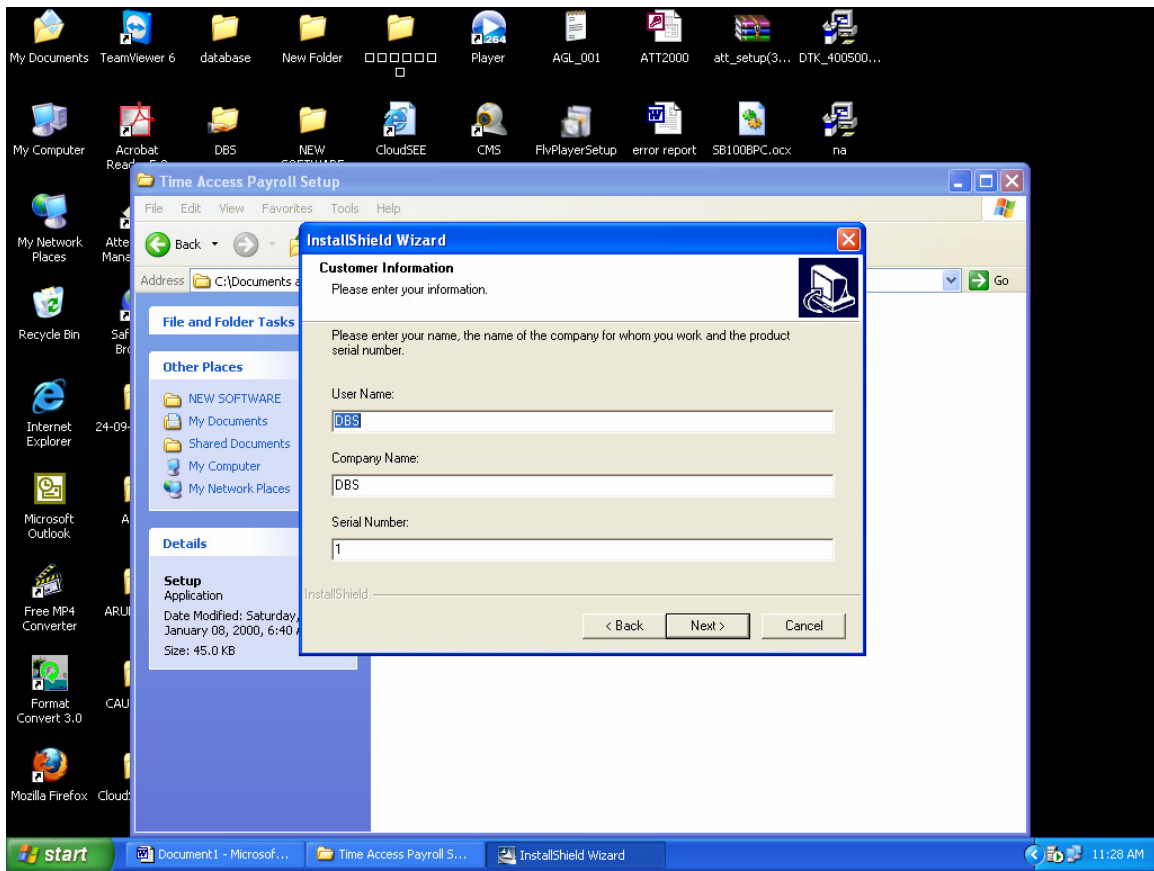


Machine id 1 , machine name DTK 401 IP address 192.168.0.224/192.168.1.224 any ip according to your network port no is **5005**

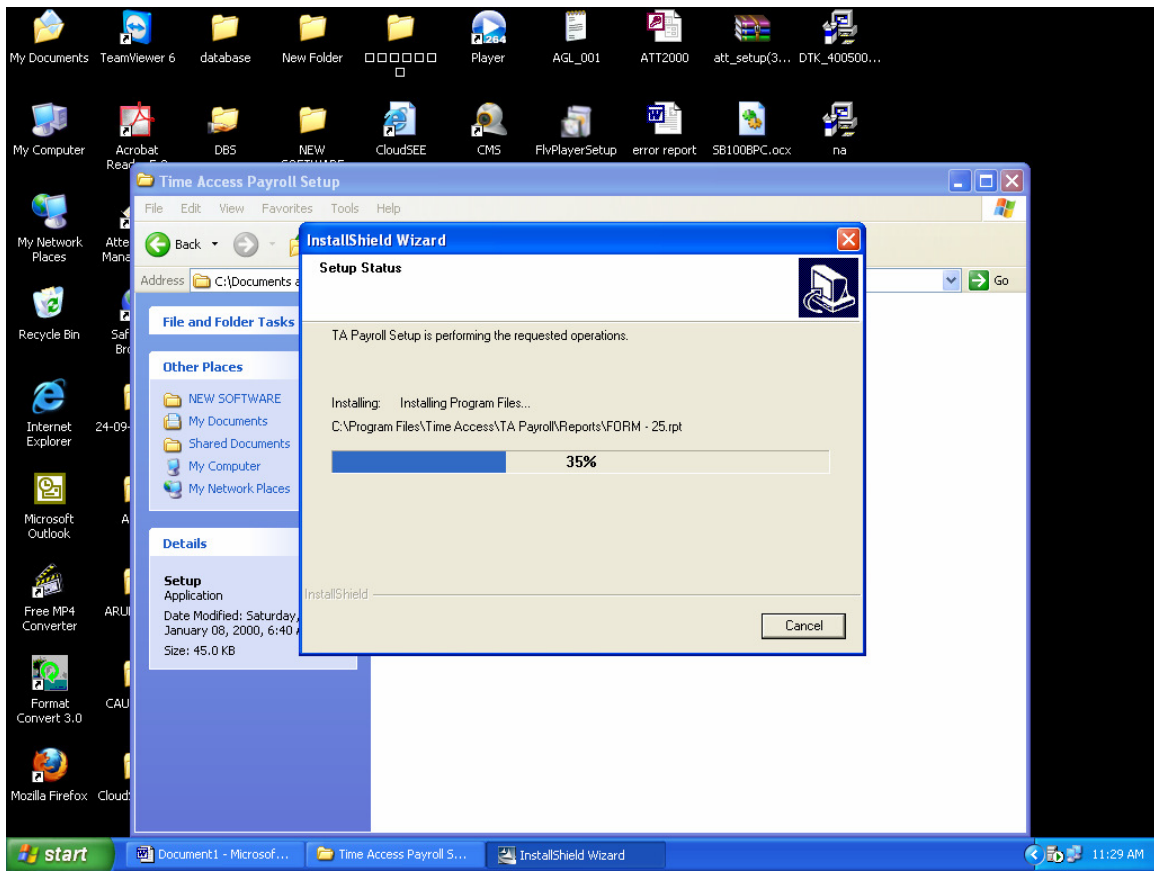




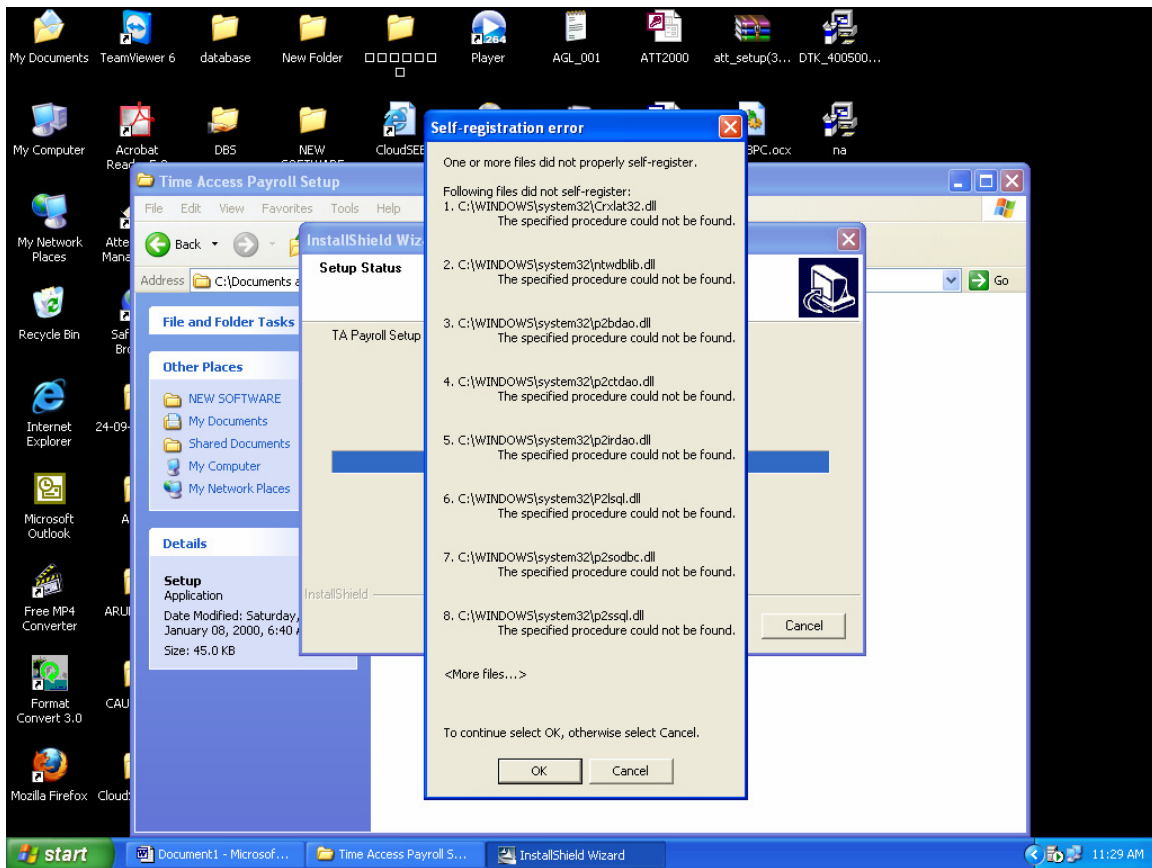
run setup payroll next –next next



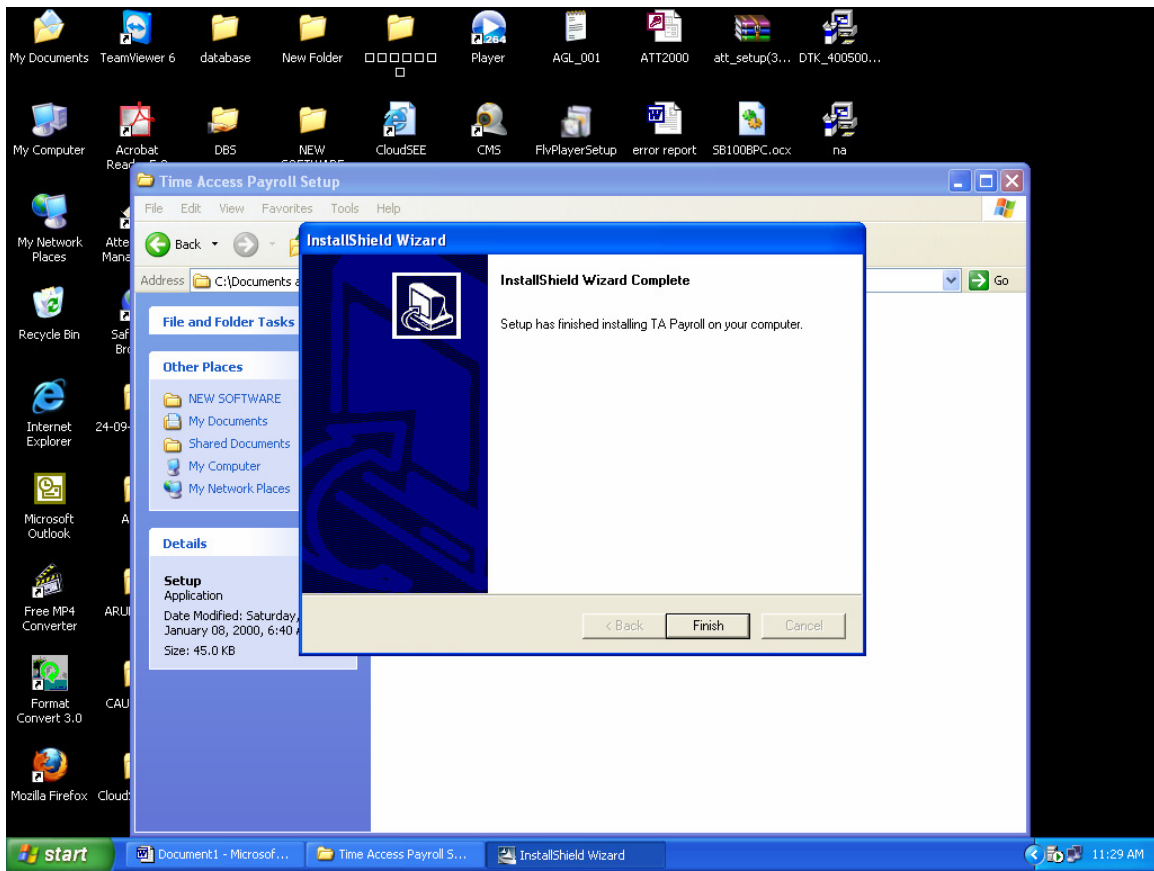
serial no any



must click ok and then finish

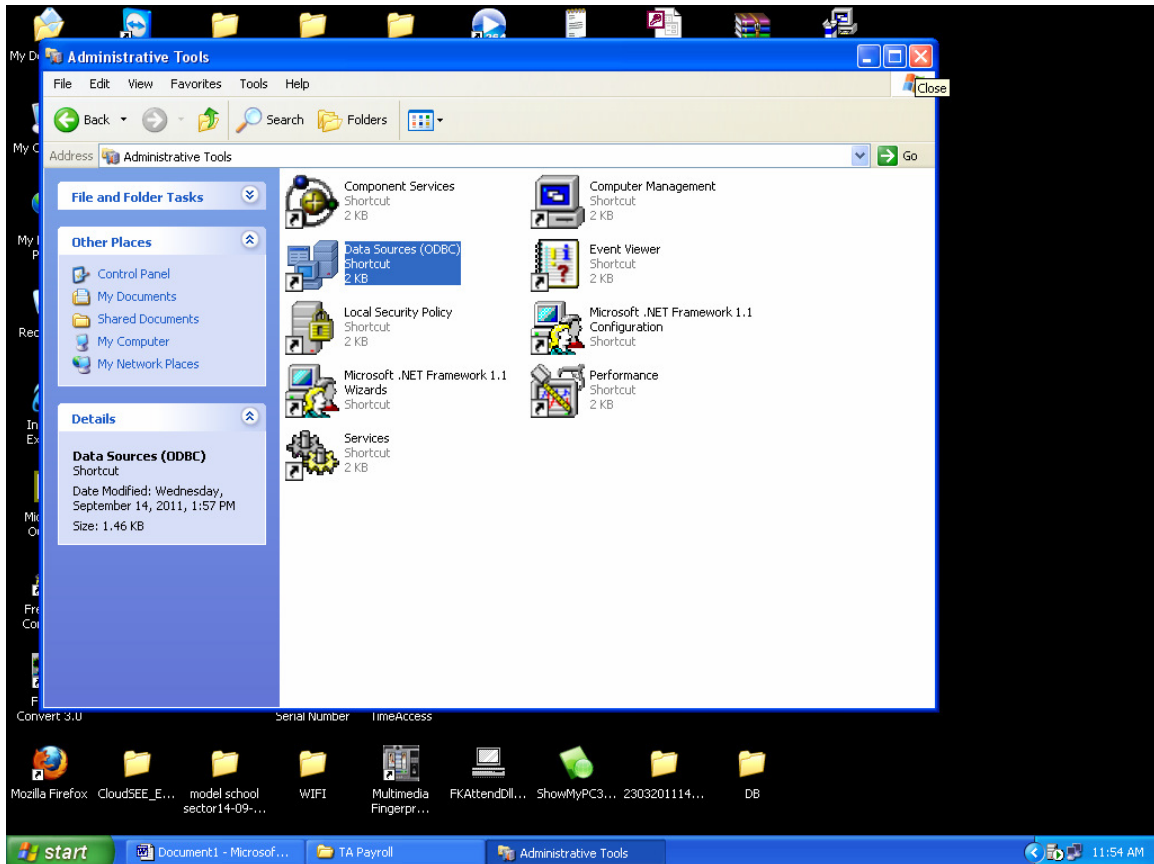


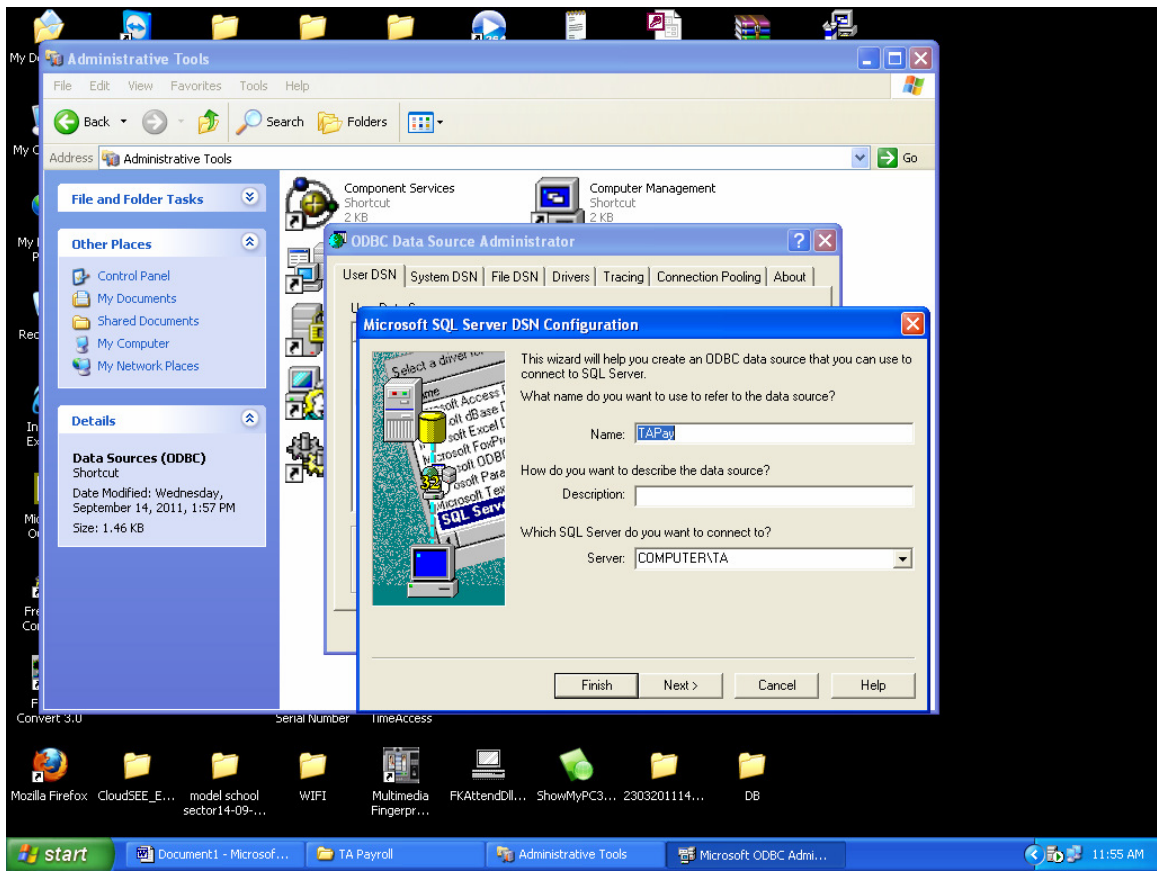
click ok



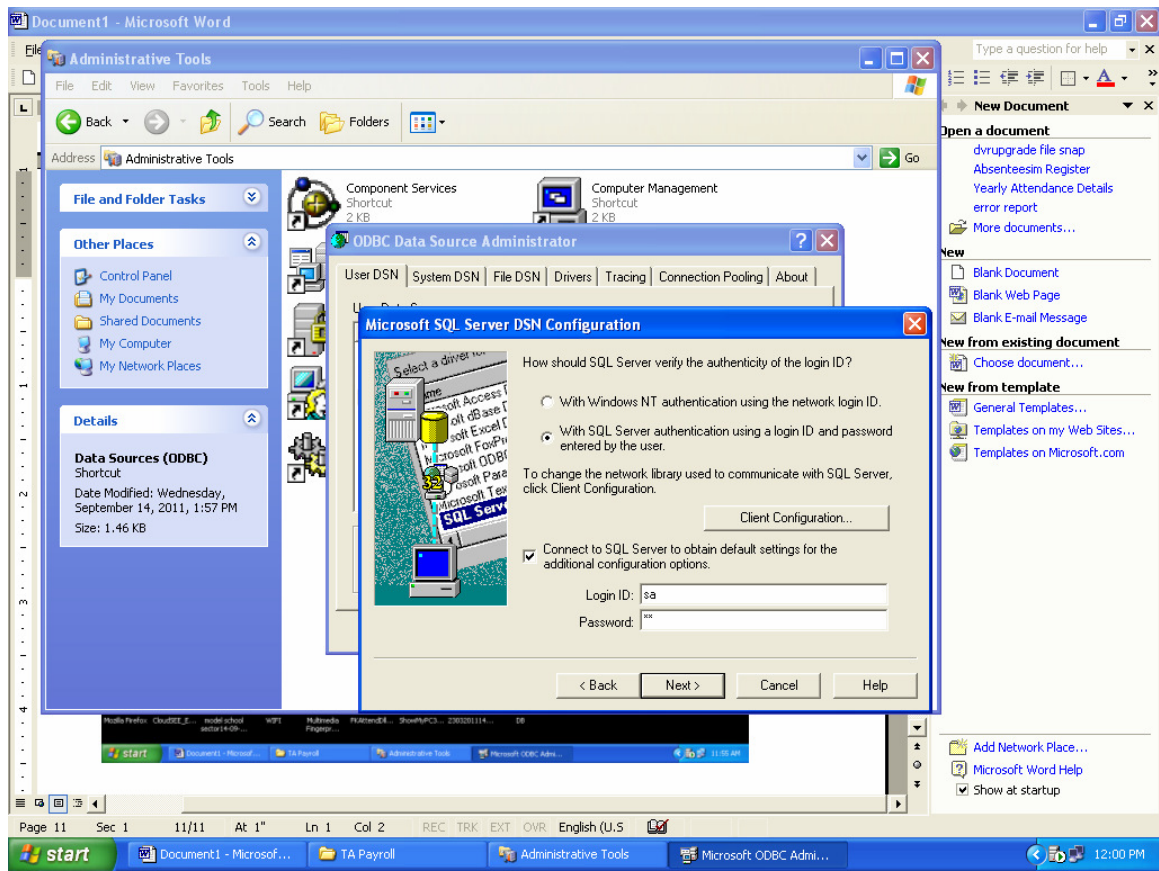
click finish

**Start – control panel –administrative tools ODBC
CLICK ADD select SQL server and finish**





write name **TAPay** and select server



**with sql server authentication ... login id is sa
password ta -next**

